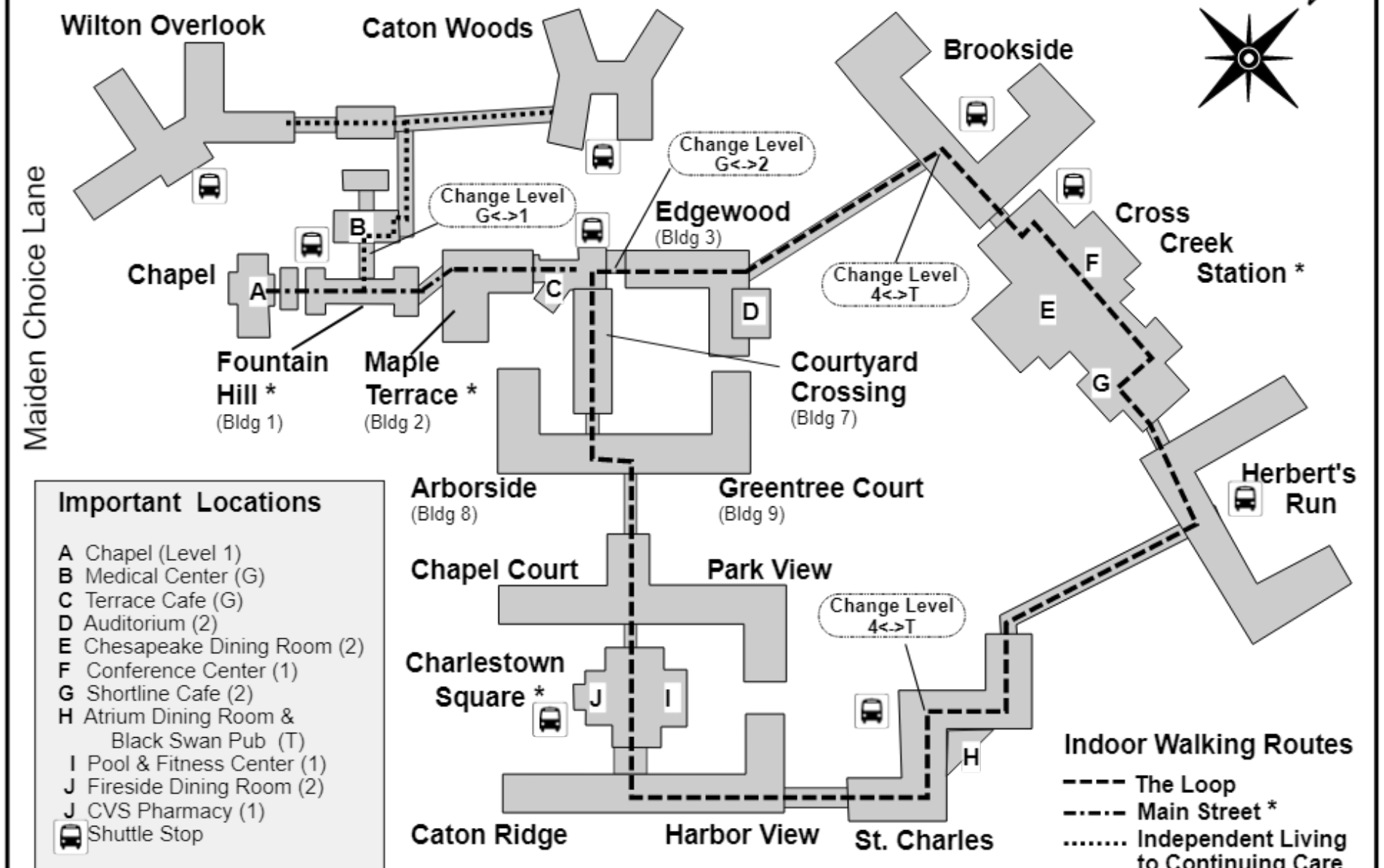


Navigating Charlestown



Maiden Choice Lane

Important Locations

- A Chapel (Level 1)
- B Medical Center (G)
- C Terrace Cafe (G)
- D Auditorium (2)
- E Chesapeake Dining Room (2)
- F Conference Center (1)
- G Shortline Cafe (2)
- H Atrium Dining Room & Black Swan Pub (T)
- I Pool & Fitness Center (1)
- J Fireside Dining Room (2)
- J CVS Pharmacy (1)
- Shuttle Stop

Publication Date: Sept. 2, 2024

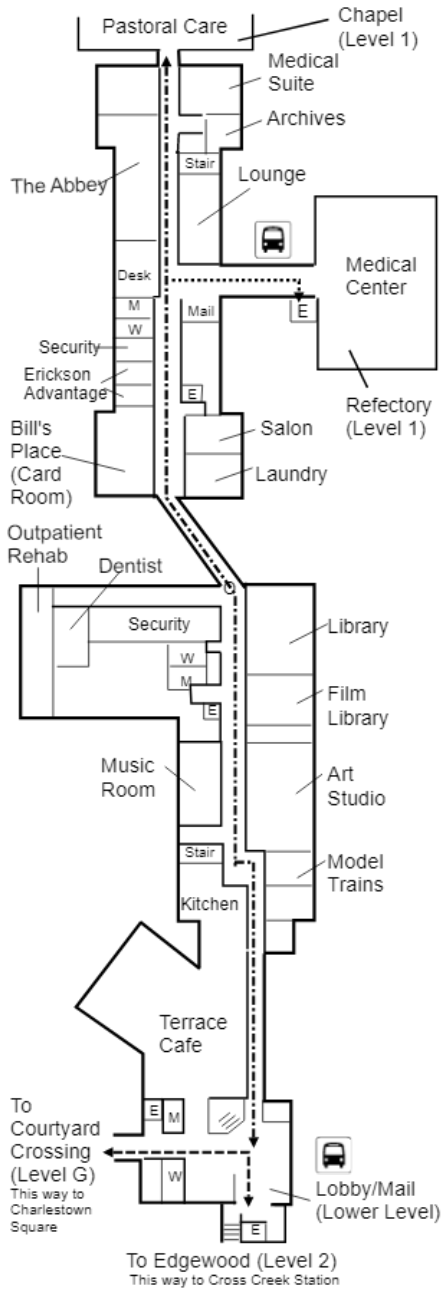
Indoor Walking Routes

- The Loop
- - - - - Main Street *
- Independent Living to Continuing Care

* Detailed floor plans are on reverse.

Main Street (Level G)

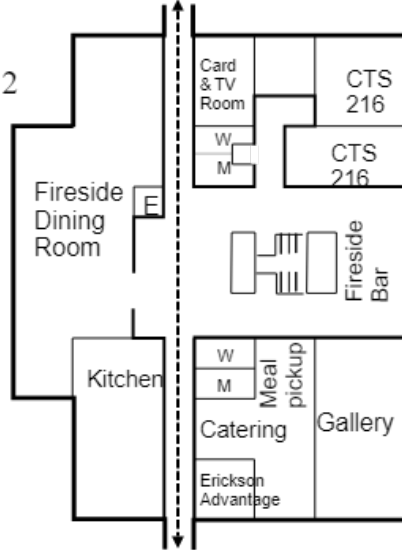
Fountain Hill to Courtyard Crossing
 Expect changes to this area in Fall of 2024



Charlestown Square

To Chapel Court and Park View (Level 3)

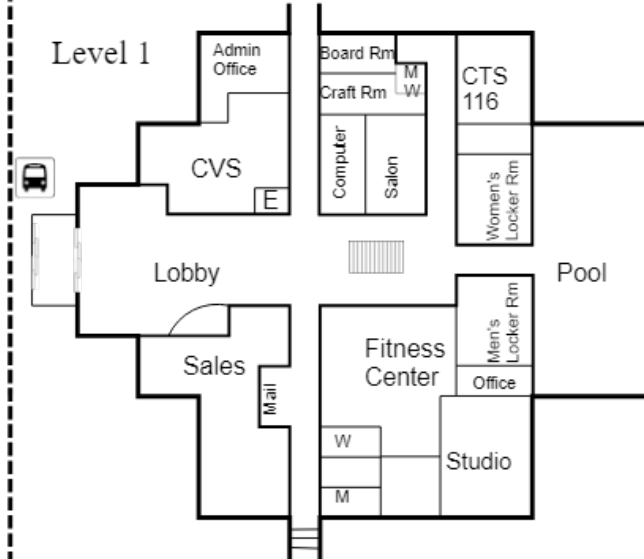
Level 2



To Caton Ridge and Harbor View (Level 4)

To Chapel Court and Park View (Level 1)

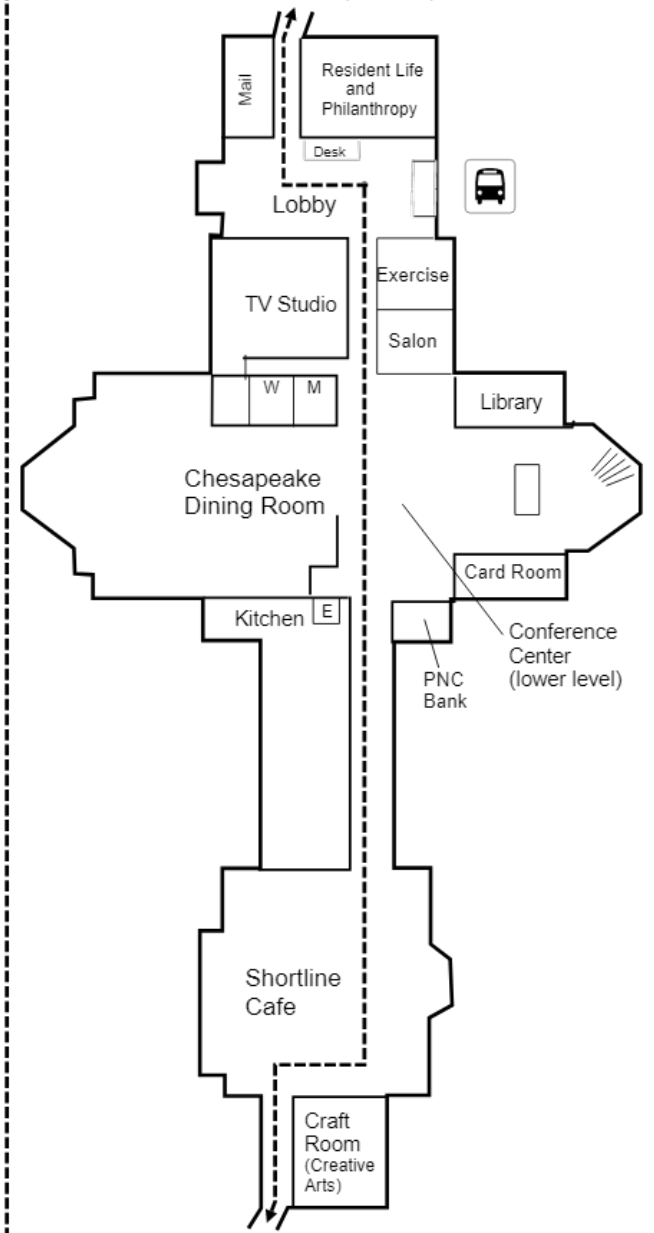
Level 1



To Caton Ridge and Harbor View (Level 3)

Cross Creek Station (Level 2)

To Brookside (Level T)



To Herbert's Run (Level 1)